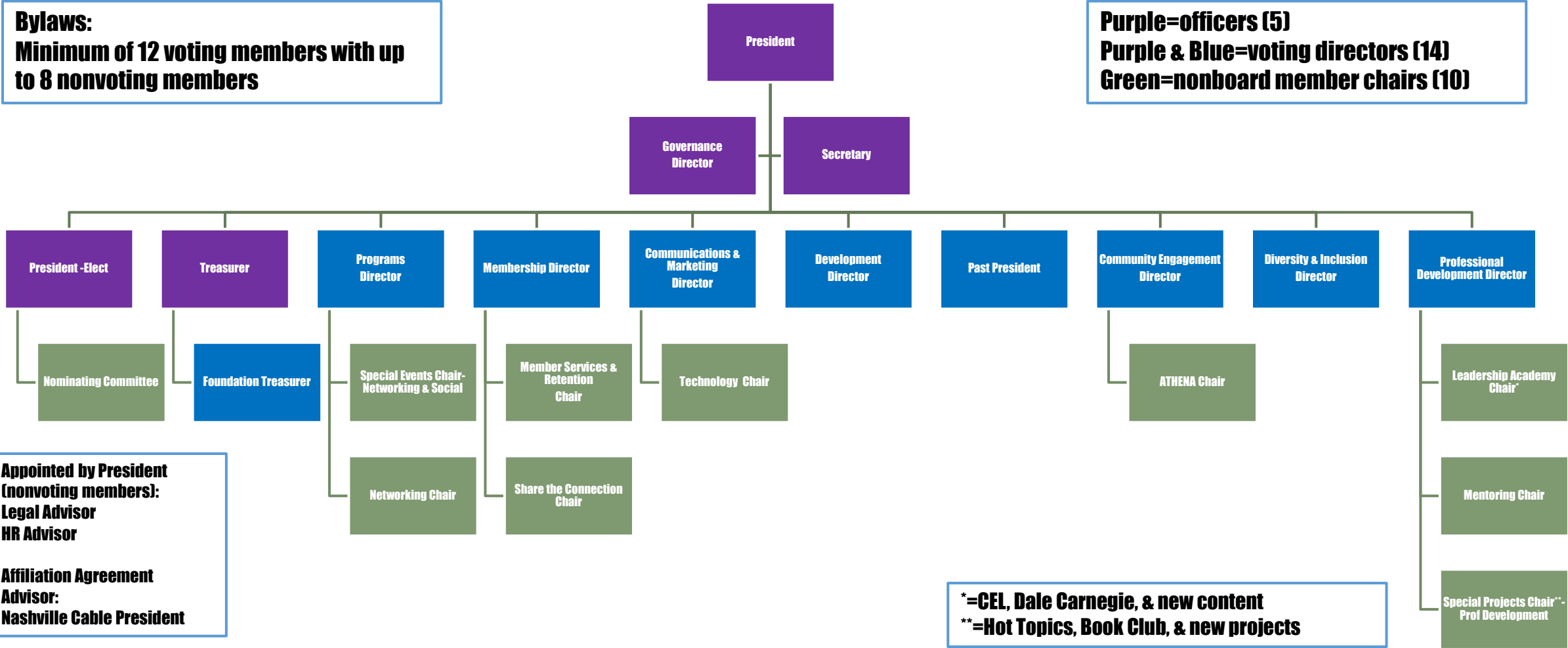


RUTHERFORD CABLE BOARD OF DIRECTORS

Bylaws:
Minimum of 12 voting members with up to 8 nonvoting members

Purple=officers (5)
Purple & Blue=voting directors (14)
Green=nonboard member chairs (10)



Appointed by President (nonvoting members):
Legal Advisor
HR Advisor
Affiliation Agreement Advisor:
Nashville Cable President

***=CEL, Dale Carnegie, & new content**
****=Hot Topics, Book Club, & new projects**